

MİMARİ KATALOG ARCHITECTURAL CATALOGUE

Alüminyum Kapı Pencere ve Giydirme Cephe Sistemleri
Aluminium Door Window and Facade Systems


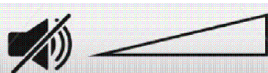


RWT75



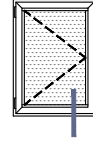
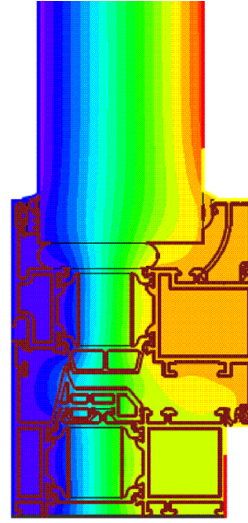
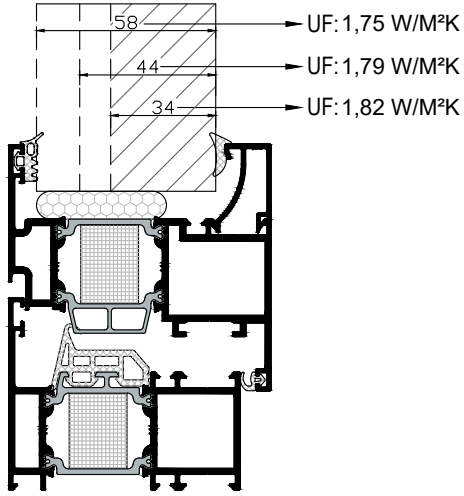
KULLANIM SEÇENEKLERİ / APPLICATION ALTERNATIVES

PERFORMANS DEĞERLERİ / PERFORMANCE VALUES 

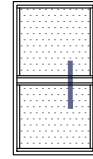
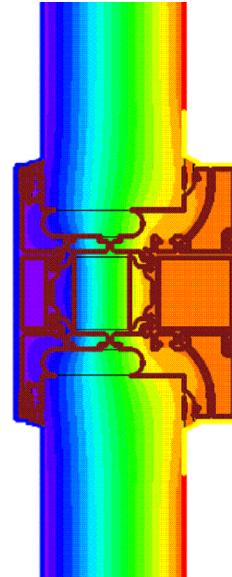
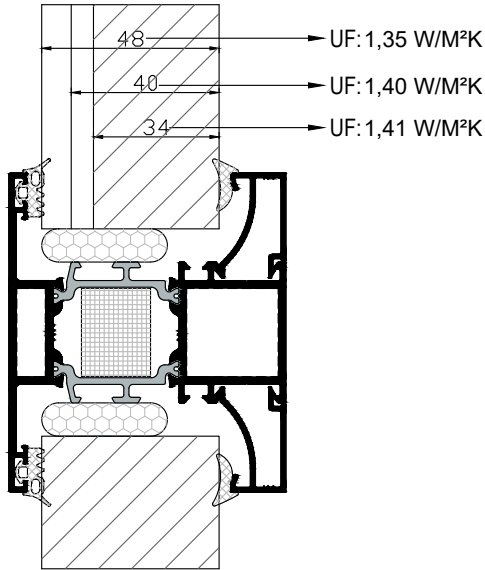
HAVA GEÇİRGENLİĞİ - EN 12207 (<i>AIR PERMEABILITY</i>)	1 (150 Pa)				2 (300 Pa)		3 (450 Pa)		4 (600 Pa)		
SU SIZDIRMAZLIĞI - EN 12208 (<i>WATERTIGHTNESS</i>)	2A (50 Pa)	3A (100 Pa)	4A (150 Pa)	5A (200 Pa)	6A (250 Pa)	7A (300 Pa)	8A (450 Pa)	9A (600 Pa)	E... (600+ Pa)	E1650 (1650 Pa)	
RÜZGAR YÜKÜNE DAYANIM - EN 12210 (<i>RESISTANCE TO WIND LOAD</i>)	1 (400 Pa)		2 (800 Pa)		3 (1200 Pa)		4 (1600 Pa)		5 (2000 Pa)		E... (2000+ Pa)
SEHİM KRİTERİ - EN 12210 (<i>DEFLECTION CRITERIA</i>)	A (L/150)				B (L/200)				C (L/300)		
STATİK BURULMA - TS EN 13115 (<i>STATIC TORSION</i>)	4 (350 N)										
SİSTEM UF DEĞERİ - EN 10077-2 (<i>THERMAL INSULATION VALUE</i>)	 1,35~1,82 W/m²K										
SİSTEM SES YALITIMI - TS EN ISO 717-1 (<i>ACOUSTIC PERFORMANCE VALUE</i>)	 Rw(C;Ctr)=42(-2;-6) dB										

ISI YALITIM DEĞERLERİ (UF) / THERMAL INSULATION VALUE (UF):

Cam Kalınlıkları (glass thickness) : min. 29mm - max. 58mm



Cam Kalınlıkları (glass thickness): min. 23mm - max. 48mm



Cam Kalınlıkları (glass thickness) : min. 23mm - max. 48mm

